

History

The City of Memphis Percent for Art program was enacted by the City Council in 2002 with the adoption of Ordinance No. 4934, by which no more than 1% of the general obligation bond amount to be used for construction costs on eligible capital improvement projects during any given fiscal year (not to exceed \$1M) may be allocated for public art and design enhancement projects of public facilities and properties.

Typically, the annual Percent for Art projects budget is between \$150,000 and \$400,000.

It has never been funded at the full amount of \$1M allowed by the ordinance.

Purpose

Artistic and cultural resources are key to the overall quality of life of a community. Public art contributes significantly to the economic vitality of a region by improving the quality of the environment and fostering a positive community identity. Historically, artists have helped shape the great public projects of other eras, from the federal monuments of our capital to the community treasures of the Works Projects Administration. The creation of the City of Memphis Public Art Program integrates the skills of artists into capital improvement and major development projects, enhancing Memphis for those who live here now and contributing to the creation of a legacy for generations to come.

Goals and Objectives

The City of Memphis's public art program is committed to the highest artistic standards in form and content and to the broadest involvement of artists.

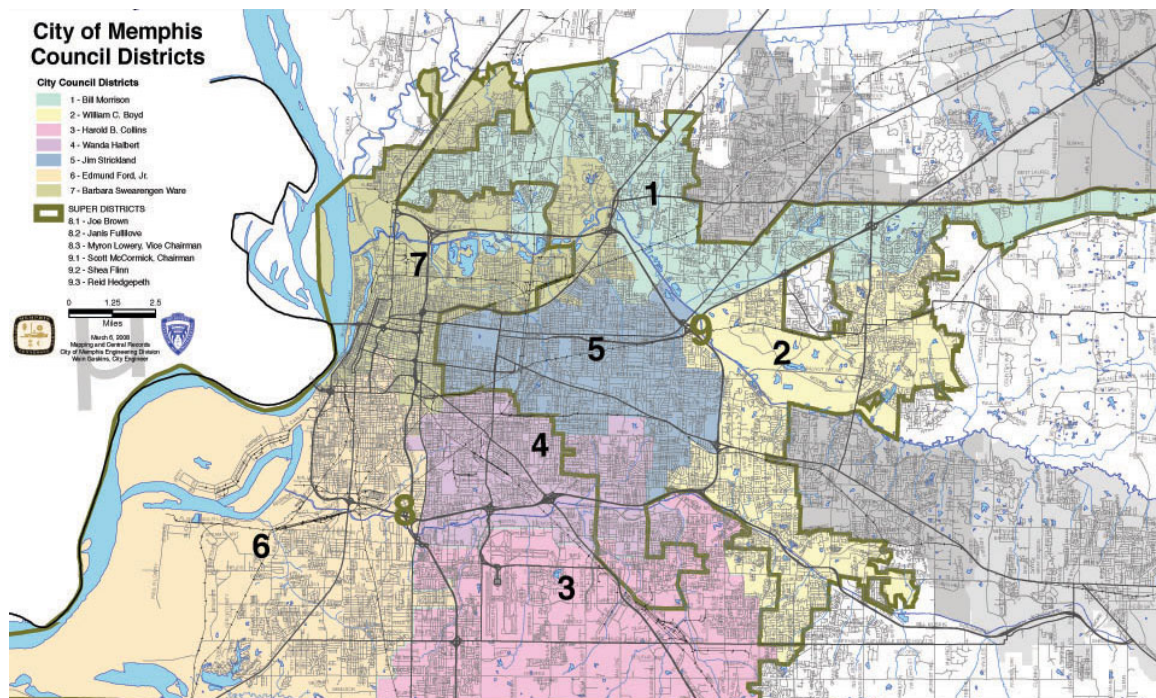
Specifically, the Public Art Program seeks:

- To enhance the quality of life of the residents of the City of Memphis through the creation of an improved physical and cultural environment;
- To enhance the visibility and stature of Memphis in local, regional, national and international arenas;
- To provide leadership in the development of high quality public spaces;
- To expand the economic vitality of the City through increased property values and new cultural tourism opportunities;
- To provide access to artistic experiences of the highest caliber for the residents of and visitors to the City of Memphis;
- To acknowledge the skills and creativity of artists which are the key to the success of such a program;
- To enhance the quality of selected City capital improvement projects through the incorporation of the skills of artists;
- To encourage innovative approaches to public art;

- To integrate artists into the planning and design process at the earliest possible opportunity;
- To engage citizens in the public art process in meaningful and responsive ways;
- To stimulate public dialogue about issues raised by public art;
- To ensure that public artwork is accessible to all individuals including those with special needs; and
- To ensure access and the equitable distribution of commissions among artists of diverse cultural backgrounds who are representative of the residents of the City of Memphis.

Map of Memphis City Council Districts

Refer to this map to determine your Memphis City Council district and representatives.



Contact Your City Council Representative

Contact your Memphis City Council representative to let them know of your support for public art in your community.

Refer to the contact list below to express your support:

MEMPHIS CITY COUNCIL MEMBERS BY DISTRICT 2010-2011

District 1:

Bill Morrison: 901-576-6786 / bill.morrison@memphistn.gov

Assistants: Danielle Spears & Dynisha Clark

District 2:

William C. Boyd: 901-576-6786 / bill.boyd@memphistn.gov

Assistants: Juaness Keplinger

District 3:

Chairman, Harold B. Collins: 901-576-6786 / harold.collins@memphistn.gov

Assistants: Lisa Geater & Ann Turner

District 4:

Wanda Halbert: 901-576-6786 / wanda.halbert@memphistn.gov

Assistants: Danielle Spears & Dynisha Clark

District 5:

Jim Strickland: 901-576-6786 / jim.strickland@memphistn.gov

Assistants: Juaness Keplinger

District 6:

Edmund Ford, Jr.: 901-576-6786 / edmund.fordjr@memphistn.gov

Assistants: Sophia Wordlaw & Sandy Rutherford

District 7:

This position is currently unoccupied, for information contact assistants below.

Assistants: Danielle Spears & Dynisha Clark

Super District 8 Members:

Position 1: Joe Brown: 901-274-4724 / joe.brown@memphistn.gov

Assistants: Sophia Wordlaw & Sandy Rutherford

Position 2: Janis Fullilove: 901-576-6786 / janis.fullilove@memphistn.gov

Assistants: Sophia Wordlaw & Sandy Rutherford

Position 3: Myron Lowery: 901-521-4300 / myron.lowery@memphistn.gov

Assistants: Maria Fuhrman & Pam Cain

Super District 9 Members:

Position 1: Kemp Conrad: 901-576-6786 / kemp.conrad@memphistn.gov

Assistants: Maria Fuhrman & Pam Cain

Position 2: Shea Flinn: 901-576-6786 / shea.flinn@memphistn.gov

Assistants: Maria Fuhrmann & Pam Cain

Position 3: Reid Hedgepeth: 901-576-6786 / reid.hedgepeth@memphistn.gov

Assistant: Juaness Keplinger

City Council Assistants' Contact Information:

Pam Cain: 576-6793 / pam.cain@memphistn.gov

Dynisha Clark: 576-6775 / dynisha.clark@memphistn.gov

Pat Lewis: 576-6799 / patricia.lewis@memphistn.gov

Maria Fuhrmann: 576-6784 / maria.fuhrmann@memphistn.gov

Ann Turner: 576-6787 / ann.turner@memphistn.gov

Lisa Geater: 576-6783 / lisa.geater@memphistn.gov

Juaness Keplinger: 576-6797 / juaness.keplinger@memphistn.gov

Sandy Rutherford: 576-6795 / sandy.rutherford@memphistn.gov

Danielle Spears: 576-6785 / Danielle.spears@memphistn.gov

Sophia Wordlaw: 576-6798 / sophia.wordlaw@memphistn.gov

PROJECTS BY DISTRICT (as of March 2011):

District 1:

Ed Rice Aquatic Center interior mural tiles

Pierotti Park sculptural seating (*in progress)

North Frayser Community Center mural (*in progress)

Safe Routes to Schools (*in progress)

Gateway mural at James Road and Scenic Highway (*in progress)

Mural program (*in progress)

District 2:

Cordova Library interior sculpture

Bert Ferguson Park sculpture

Hickory Hill Police Precinct sculpture

Motor Vehicle Inspection Station sculptures

Animal Shelter tile mosaics (*in progress)

Countrywood Park sculpture (*in progress)

Walnut Grove Expansion sculpture (*in progress)

Wolf River Greenway sculptures (*in progress)

Gateway mural at Ridgeway and Park (*in progress)

Mural program (*in progress)

District 3:

Whitehaven Library wall hanging sculptures
Links at Whitehaven shade sculptures
Gateway sculpture (*in progress)
Mural program (*in progress)

District 4:

Glenview Community Center
Orange Mound Community Center collage panels
Airways Station mural
Safe Routes to Schools (*in progress)
Parkways Emblem wayfinding sculptures (*in progress)
Charjean Park wayfinding sculptures (*in progress)
Gateway sculpture at Lamar, Southern, and McLean (*in progress)
Mural program (*in progress)

District 5:

Peabody Park sculptures and Skinner Center decorative glass
Black Bayou sculptural fence
Overton Park / Levitt Shell sculptural archway (*in progress)
Lester Community Center mural (*in progress)
Skate Park sculpture (*in progress)
Gateway sculpture (*in progress)
Mural program (*in progress)

District 6:

Links at Riverside sculptural gates
Dalstrom Park sculptures
Chickasaw Heritage Park (*in progress)
Gateway sculpture (*in progress)
Mural program (*in progress)

District 7:

Dave Wells Community Center mural tiles
Auction Street Traffic Circle sculpture
Overton Crossing / Rugby Gates sculpture
Court Avenue Bridge interactive lighting sculpture
Katie Sexton Community Center sculpture
City Hall Equipment Screen sculpture
Legends Park/Dixie Homes (*in progress)
Univ. Place/Lamar Terrace (*in progress)
Beale Street Landing (*in progress)
Hollywood Library (*in progress)
Uptown sculpture (*in progress)
Gateway sculpture (*in progress)
Mural program (*in progress)